

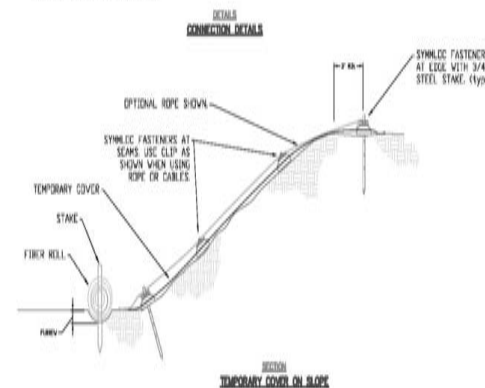
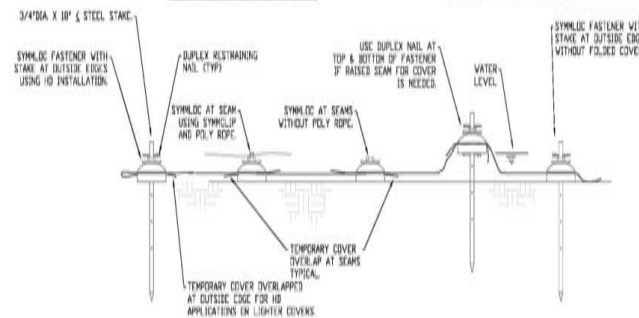
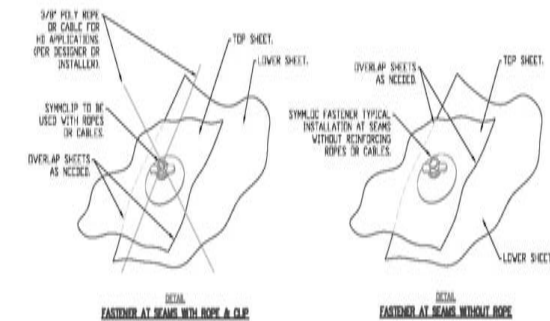
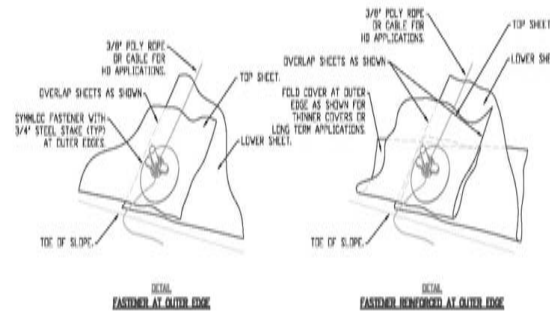
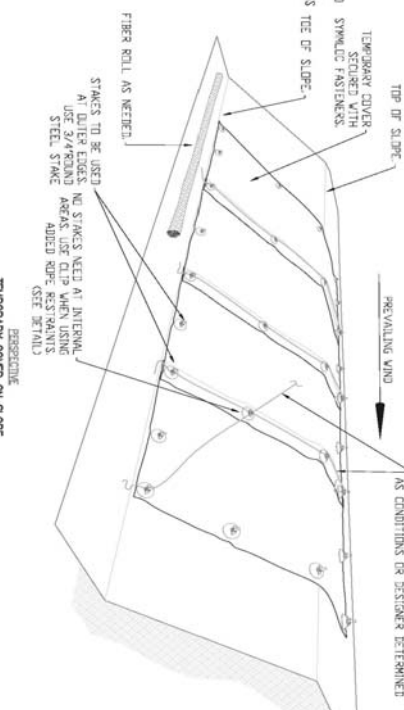
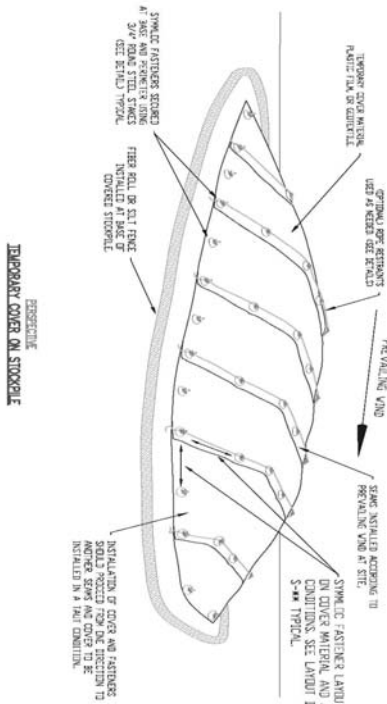


PROTECTING YOUR SURFACE FROM THE ELEMENTS

Symmloc is a fastener for holding tarps, fabrics, and visqueen. Using this new fastener you can hold your covers in place without the need for sandbags.

- **Cover Dirt Piles.**
- **Protect Hillside from Erosion.**
- **Build Temporary Covers for your work.**
- **Temporary rain or dust barriers.**
- **Cover freshly poured Concrete for your Curing Requirements.**

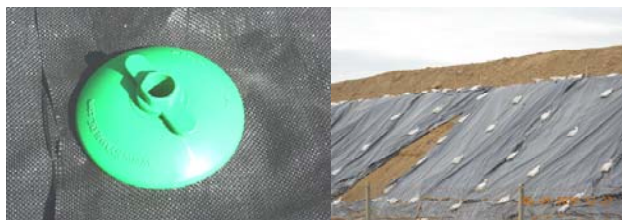
**LOOK NO SANDBAGS
Fewer units and it's still covered**





This is what the Symmloc Fastener can do for you by it's superior performance, while slashing your time, cost and the equipment that you won't need, compared to using sandbags.

The old way requires you to install more sandbags and far greater weight, but is less effective. This is



The Symmloc fastener is a light weight alternative to heavy sand bags, but don't let the light weight fool you, because 1 Symmloc fastener, with 2 layers of 6 mill visqueen can support 200 lb. Can your 35 lb. sandbag do that?

The Symmloc fastener is designed to be reused over and over again, unlike sand bags that are usually discarded after one use.

Due to the light weight of the Symmloc fastener hundreds can easily be installed in one day by a single laborer, and for every 35 lb. sandbag that the laborer must carry, they could carry 70 Symmloc Fasteners equaling the same amount of weight. This not only means that your crew can accomplish more with less effort, but it also means that they can do their work without the need for heavy equipment that is needed to move the sandbags on site.



The Symmloc fastener can be assembled as needed in the field. The hole in the center provides the ability to hold down the edges of your plastic, without sandbags, and is far more effective so you will use less Symmloc's than Sandbags. 60% less units and 99% less weight



The Symmloc fastener is designed to grip the sheet material whether it is Visqueen, Plastic Films, Tarps, or Geo-Fabric material, the Symmloc's adjustable connector allows you to fasten multiple layers and thicknesses . The Symmloc also grips the material in a 360 degree direction.

Symmloc Fasteners outperform sandbags in **windy conditions** even with fewer units installed. This means little or no maintenance with less back breaking labor required when using sandbags



The Symmloc Fasteners can also be used to build temporary covers. The one shown here has withstood high winds over a period of several months and was constructed with 10 mil visqueen and a wood frame, this is possible because each Symmloc Fastener can hold 120 pounds with this type of material and more with stronger materials (see our Chart on right and our website for videos & test results.)



You will install fewer Symmloc Fasteners than you will sandbags. One Symmloc using 10 mil plastic can hold 120 pounds, Five sandbags can hold 80 pounds. Our Website has a video that demonstrates its holding ability in windy conditions. (see our website for videos)

Symmloc and sandbag holding ability comparison.

Sam-ple #	Description*	Ultimate Load (lbs.)
	SYMMLOC	
1*	Plastic Film - 6 mil	216
2*	Plastic Film - 10 mil	249.7
3*	FeedPro™ A5WB - 5 mil	275.4
4*	Dura-Skrim® - 12 mil	966.4
5*	Mirafi® 500X - 5 mil	990.6
	Sandbags	
6	35 pound sandbag flat	16
7	35 pound sandbag flat (2) layers	14
7	35 pound sandbag @ 22 degree angle	14

* See Testing Engineers, Inc. Test Results.

Symmloc uses:

- SWPPP Erosion Control.
- Cover Stockpiles.
- Cover Exposed Slopes for Erosion Protection.
- Cover Spoils and Silage Piles to keep them dry.
- Cover Concrete for Proper Curing.
- Cover Building openings from outside elements.
- Cover Open Roofs against the Weather.